



PORTLAND HISTORICAL SOCIETY

P. O. Box 98, Portland, CT 06480

OCTOBER 2002 NEWSLETTER

Callander House Certificate of Occupancy

The Ruth Callander House Museum of Portland History is finally official. The town Planning Department has issued our Certificate of Occupancy indicating that the Society has met all of the requirements for the building. Thanks to numerous volunteer hours and efficient contractors, each fixture, valve, fire extinguisher and exit sign is now in place. The last obstacle was overcome when the Town highway crew paved the parking lot creating a firm surface for visitors. Three cheers for everyone who contributed to this achievement.

When shall we open for visitors?

The artifact inventory team of Marie Keser and Vivian Dower work weekly on computerizing our present collection, but are far from finishing that task. There are many artifacts stored around town that need to be included.

In the meantime we want to create a preview display as soon as possible -- an exhibit showing a selection of artifacts representing all three plus centuries of Portland's history.

To prepare the display, we need help now. The chosen artifacts must be renumbered - a brief history of the artifact will be written and perhaps a related picture chosen for the display. It will be interesting work, providing a stroll down memory lane for some, and an introduction to Portland's past for others.

After this initial effort, creative designers will be needed to set-up the displays. If you have time to donate in any way, send us an e-mail or call 342-0303 or Chris Sullivan at 342-4105.

Portland Historical Society 2003



Historic Gildersleeve

2003 Calendar: "Historic Gildersleeve"

The 2003 calendar explores the Gildersleeve section of town, which was once a thriving commercial center. The monthly photos are sequenced as you would see the buildings while driving north on Main Street, then west on Indian Hill Avenue. The cover features the Gildersleeve Post Office and General Store; other pictures included are of the 1890 Fire House, the Congregational Church, the Union Hotel, the old Gildersleeve School, the Gildersleeve shipyard and a number of 18th century houses. The frontispiece includes a history of the area and an 1859 map showing all of the area residents at that time.

The calendar make-up was conceived and completed by Doris Sherrow and Bob McDougall. Harry Hetrick, a local resident and a visitor to the Society's booth at the Portland Fair, explained that his father, (also Harry), ran Harry's Tavern, shown on the cover of the calendar. He identified the car pictured in the foreground as that of Honey Dugan, a blacksmith. He noted that the car was down on its back springs, because the trunk was filled with horseshoes.

NOTES:

Donations To the Museum

Newbridge Dairy display case-Jane Rich

Stone garden bench for the Betty Keser
Scott Garden - Portland Garden Club

Whitby Market Calendar, 1913, permanent loan
from Russ Bengtson

“J.Bransfield - Grocer” brown bottle - Russ
Bengtson

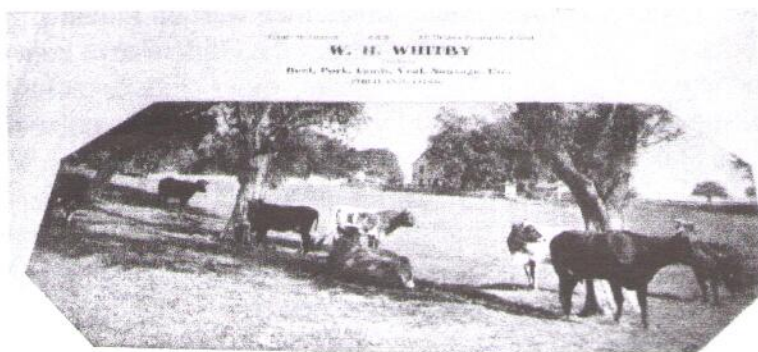


**Regina Woltman receiving donation
from Russ Bengtson at fair booth**

Memorial donations to the Ruth Callander House Fund

During the year, two of our Charter members died:
Pauline (Pat) Csere, and Mary Gildersleeve. Pat
was the Society Museum curator for many years
and Mary an active contributor. We thank all of
you who remembered them with contributions to
the Museum fund.

THE “WHAT IS IT?” BOARD created by Don
Goodrich, was a high point of the Society booth at
the Portland Fair. The four antique items displayed
were a grapefruit corer, a meat cleaver, a spring-
loaded chopper and a cheese slicer. Five entrants
identified three of the items but no one managed all
four. There were some very creative entries
however: the grapefruit corer was identified as a
“steer horn puller” and the cheese slicer as a
“prototype for a lady’s shaver”.



1913		JANUARY		1914	
1	2	3	4	5	6
7	8	9	10	11	12
13	14	15	16	17	18
19	20	21	22	23	24
25	26	27	28	29	30
31					

Membership - The annual letter and return envelope are included with this Newsletter. Note that the number on your address label indicates the year that you last joined the Society.

2003

Portland Calendars Order Now!

Calendar Features

- Large Pages, room to write
- 13 Photographs
- Holidays, Season Changes
- Daylight Saving Dates
- Historical Society Meetings
- Corner Calendars
- 2004 reference calendar

Photo Features

- 1859 Map of Gildersleeve
- 646 Main St-Gildersleeve Store
- 554 Main St - Cong. Church
- 575 Main St - School II c. 1889
- 582 Main St - Ebenezer White
- 584 Main St - David White
- 601 Main St - Fire House
- 628 Main St - George Lewis Jr.
- 3 Indian Hill Ave - Job Bates
- 5 Indian Hill Ave - David Bates
- 55 Indian Hill Ave - David Sage
- 58 Indian Hill Ave-Gildersleeve
- 64 Indian Hill Ave-John Pelton
- 27 Indian Hill Ave - Shipyard

\$6.00 Each

\$1.00 In town Delivery
\$2.00 Postage & Handling
to address of your
choice (out of town)

PORTLAND HISTORICAL SOCIETY



PO Box 98, Portland, Connecticut 06480

E-mail: PortlandHistSoc@Yahoo.com

Web: PortlandHistSoc.org

Name _____

Address _____

Telephone _____ E-mail Address _____

I'm enclosing my membership!

() Individual \$10. () Family \$20. () Individual lifetime \$250.

() Business Sponsor \$ _____

Callander House Endowment Fund \$ _____

Heritage Calendar for the new year - mailed - Quantity _____ \$ _____

* * * * *

Please make your tax deductible check payable to:

PORTLAND HISTORICAL SOCIETY

"Historic Gildersleeve", Portland Historical Society Inc. 2003 Calendar Order Form

Portland Historical Society

Make Check payable to:

2003 Calendar, "Historic Gildersleeve", Portland, Connecticut		\$6.00	
Price	Qty.		Total
Postage, Handling; to the address of your choice:		\$2.00	
(for 1 to 4 calendars)			
Total Payment Enclosed:			

Name: _____
 Address: _____
 City, State, Zip: _____
 Phone (optional): _____

Send to: _____
 Portland Historical Society, Inc.
 P.O. Box 98
 Portland, CT 06480-0098

Place
Stamp
Here

PORTLAND HISTORICAL SOCIETY
 P. O. Box 98,
 Portland, CT 06480

PORTLAND HISTORICAL SOCIETY

P. O. Box 98, Portland, CT 06480

October, 2002

2003 MEMBERSHIP

Greetings to our current members and welcome to prospective members of the Portland Historical Society for the year 2003. The Society is open to all people interested in preserving Portland's history.

- ❖ The Society works to raise awareness of Portland's historical assets through local programs, heritage walks to historical sites, collection of historical artifacts and a newsletter listing events of interest.
- ❖ Now, the **Ruth Callander Museum of Portland History** (492 Main Street) has finally obtained its Certificate of Occupancy from the town. We have met all building code requirements! We look forward soon to an opening exhibit showing samples from our collection of Portland artifacts. Documentation and storage of the entire collection, a long job, continues. This exciting opening event needs lots of hands, ideas and support. We hope yours will be among them.

Included in this mailing is an envelope for next year's membership and **a form to order the 2003 Historical Society Calendar**. This issue of the Calendar continues to feature photos of old Main Street - this time of the Gildersleeve section.

Memberships make a nice holiday gift for family and friends. They are tax deductible.

We thank you for your support and look forward to seeing you at future Society events.

Sincerely,

Jean B. Kelsey (s)
Jean B. Kelsey, Membership Chair

Robert W. McDougall (s)
Robert W. McDougall, President

**2002
OFFICERS**

President

Robert McDougall

Vice-President

Donald Kelsey

Secretary

Ruth Freeburg

Treasurer

Charles Woltmann

Directors

Regina Woltmann

Shirley Sullivan

James McCabe

Finance Directors

James Elder

Pat Crowther

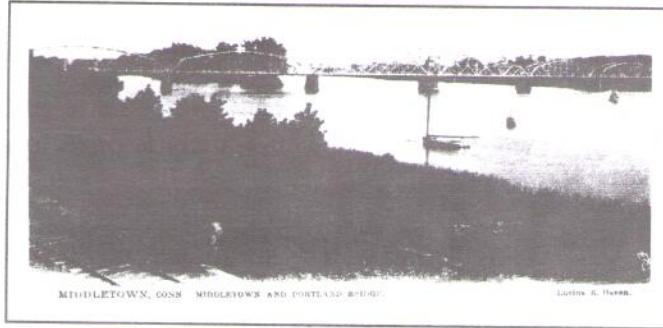
Donald Goodrich

PROGRAMS - Regina Woltman

**12 November - Annual Meeting - Pot Luck Supper, 6 PM -
Hemlock Grange - Bring a casserole for 6 - 8 and place set ups.
The Society Board will provide breads, desserts and drinks.**

?? December - Ruth Callander House preview opening. Watch for date.

**28 January - Carolyn Laban, Middletown, will speak of her efforts to
preserve the family homestead.**



NEWSLETTER - Phyllis & Bill Frisbie, 10/25/02

PORTLAND HISTORICAL SOCIETY
P.O. Box 98, Portland, CT. 06480

**NON-PROFIT ORG.
U.S. POSTAGE
PAID
PERMIT No. 19
Portland, CT
06480**

NEWSLETTER!