



PORTLAND HISTORICAL SOCIETY

P. O. Box 98, Portland, CT 06480

NOVEMBER 2001 NEWSLETTER

ANNUAL MEETING - NOVEMBER 13, 2001 - 6 P. M.

will be held at the Grange Hall, 17 Sage Hollow Road. A pot luck supper will precede the meeting. Discussion of the annual budget, committee reports, election of officers and plans for 2002 will be on the agenda. Bring your suggestions, comments and ideas.

Members are asked to bring a casserole or salad for 6 - 8. Beverage, bread and dessert will be provided by the Board.

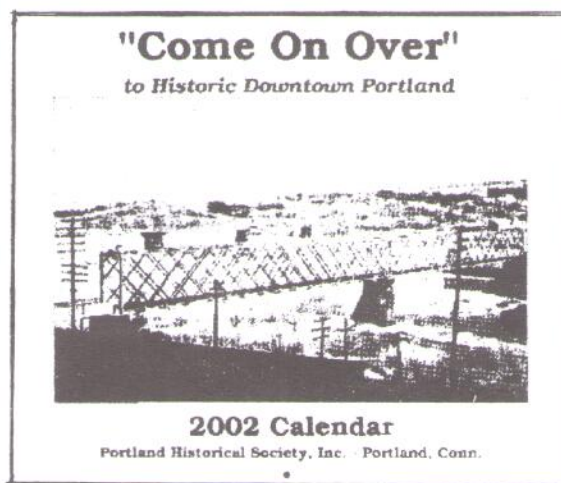
2002 HISTORICAL CALENDAR

The Portland Historical Society has just issued its 2002 calendar recording life on Main Street over the years. The part covered is that included in the on-going Main Street revitalization program reaching from the bridge to the Post Office.

Bob McDougall, Publisher and Doris Sherrow, researcher have done a wonderful job choosing pictures representing our memories of the changing life on Main Street from the late 1800's to the mid 1900's.

Besides its wonderful pictures, the calendar also summarizes the history of Main Street and the Town beginning with the first Wangunk Indian Deed to the Middletown Proprietors in 1672. From brownstone tombstone cutting by the first resident through service businesses, barbers, meat markets, cobblers, clothing stores and even a Chinese laundry, "downtown" has always been a busy place. We hope the new revitalization program will renew and carry forward this vital history.

The calendar will as usual be available in the Town Clerk's Office, the Library, and a number of stores. Look for it standing on the counter. Or mail order from our address above - the price is still \$6. plus \$2 mailing charge.



2002 MEMBERSHIP -

Bob McDougall, President

This newsletter contains the annual membership invitation and an envelope for your convenience. The state of your membership can be found on your address label. "L" identifies life members and dates such as "01" give the last year you joined. An "0" or other mark on the label indicates a courtesy newsletter. We invite you to renew your membership or become a new member and help support your Historical Society.

PORTLAND HISTORICAL SOCIETY
FINANCE COMMITTEE RECOMMENDED BUDGET
FISCAL YEAR 2001 - 2002

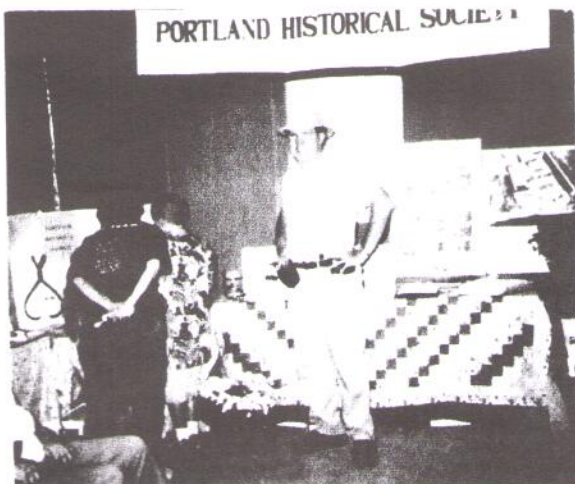
CALLANDER HOUSE MUSEUM BUDGET	2000-01 BUDGET	2001-02 BUDGET
EXPENSE ITEM		
Electricity	150	150
Water	110	330
Sewer Usage	220	440
Heating Oil	1,200	1,200
Telephone	215	215
Insurance	1,500	1,500
Grounds maintenance	350	500
House Maintenance	650	750
Major Maintenance	2,000	2,000
Capital Expenses	10,000	6,000
Acquisitions	500	1,000
TOTAL EXPENSES	16,895	14,085
INCOME ITEM		
Endowment Fund Income	13,395	10,585
Fund Raisers	2,800	2,800
Gifts/Donations	700	700
TOTAL INCOME	16,895	14,085
EXCESS INCOME/EXPENSES	0	0

Endowment fund income is expected to be sufficient to meet Callander House needs. Society assets were \$191,452 as of June 2001.

SOCIETY OPERATING BUDGET	BUDGET 2000-01	BUDGET 2001-02
EXPENSES		
Programs	800	800
Newsletter	550	550
Museum	230	230
Membership	200	200
Purchase of Products for Re-Sale	2,650	2,880
Miscellaneous	1,000	1,000
TOTAL EXPENSES	5,430	5,660
INCOME		
Membership Dues	2,400	2,400
Sales of Products	2,880	3,100
Miscellaneous	125	125
Meeting Program Income	25	35
TOTAL INCOME	5,430	5,660
EXCESS OF INCOME/EXPENSES	0	0

Society policy is to cover operating expenses from membership income and product sales.

2-Nov-01



Booth at fair with President

THE GREAT PORTLAND FAIR

Our booth featured the 2002 calendar pictures of Lower Main Street, a circular file filled with copies of historic pictures of Portland life and Don Goodrich's famous quiz showing antique items for identification. Of the many participants, there were seven winners.: Clarence Smith, John Dillon, Karen Johansmeyer, Alice Wicke, Lisa Paradis all of Portland, John

Leone of Lebanon and Juanita Chappell of Salem. Did you guess them right? The answers: ice tongs for blocks of ice, an early can opener, a hame - which is part of a horse's harness and an ice pick, to break-up ice blocks.

RUTH CALLANDER HOUSE PROGRESS - Eleanor Crowther and Chris Sullivan - 342-4105

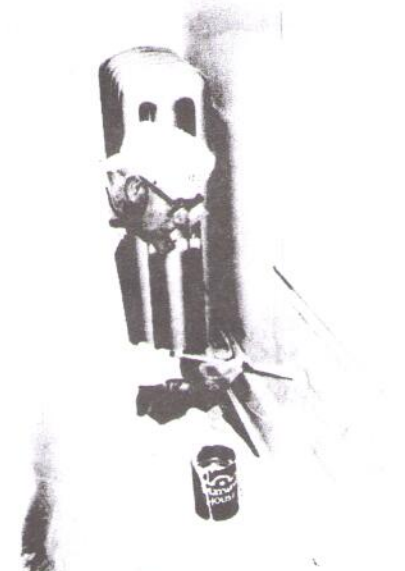
From the parking lot one will soon follow a path to the new handicapped access ramp up to the back porch where a smaller ramp allows you to enter through the new wide door with its full-length side light (replacing the old unacceptable French doors) into the future exhibit room. An efficient and attractive new entry.

At the back of the old kitchen, the new handicapped bathroom has been built, its floor finished with an attractive vinyl covering and newly installed fixtures. Shelves are being built in closets and will soon be ready for helpers to inventory, sort, and organize.

(A folding table for the office would be useful should you know of one going begging.)

The Museum Committee is drafting practices and procedures to guide the work of the museum and direct its focus

Recent donations to the Callander House endowment came from: Ann Gildersleeve Sloan, William B. White, and Jane Sweet.



George Wilson in a tight corner

PORTLAND HISTORICAL SOCIETY



PO Box 98, Portland, Connecticut 06480

2002 MEMBERSHIP

Greetings to our current members and welcome to new members of the Portland Historical Society for the year 2002.

We offer interesting programs relating to our town and its past history. The Spring Town-Wide Tag Sale has been a big success for five years. Many shoppers from nearby towns participate and it has brought about a neighborly feeling with a friendly atmosphere. This event funds many of our expenses.

The Society also sponsors:

- A Newsletter with short articles and listings of events
- The Heritage Walk which points out historical sites
- Public awareness of Portland's historical assets

Work on the Callander House is progressing and we will be having an open house with museum displays in the near future. Wouldn't you like to participate and be a part of this exciting event?


Included in this mailing is an envelope for next year's membership and a form to order the 2002 Portland Historical Society calendar. It features photos of downtown Main Street that reflect its life from the late 1800s to the mid 1900s.

Memberships may also be given as gifts to family, friends, or some former residents who may have moved away but would still enjoy hearing about the town. Membership is tax deductible.

We thank you for your support and look forward to seeing you at future Society events.

Sincerely,


Jean B. Kelsey, Membership Chair


Robert McDougall, President

PROGRAMS - *Regina Woltmann*

2000-2001 OFFICERS

President

Robert McDougall

Vice-President

Donald Kelsey

Secretary

Ruth Freeburg

Treasurer

Charles Woltmann

Directors

Shirley Sullivan

George Wilson

Regina Woltmann

Finance Directors

Daniel Crowther

James Elder

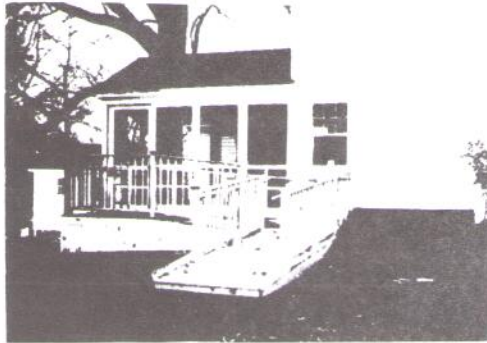
Donald Goodrich

November 13 -

ANNUAL MEETING & POT LUCK SUPPER.
Hemlock Grange Hall, 17 Sage Hollow Road,
6 PM. *Introduction of the 2002 Historical Society
Calendar by Bob McDougall after the business
meeting.*

January -

To be announced.



The new access ramp to the Museum

QUESTIONS - historical or otherwise?

We now have both an e-mail address and web site thanks to Bob McDougall. The e-mail address will speed any communications with the Society. It is: PortlandHistSoc@Yahoo.com. The web site (www.PortlandHistSoc.Org) will carry Society news and has convenient links to other Portland organizations as Pride, Brownstone Quorum, Portland Fair and the Town Hall. If you're not part of the computer world leave a message on our answering machine at 342-5455.

NEWSLETTER – *Phyllis and Bill Frisbie, 11/5/01*

PORTLAND HISTORICAL SOCIETY

P.O. Box 98, Portland, CT. 06480

NON-PROFIT ORG.

U.S. POSTAGE

PAID

PERMIT No. 19

Portland, CT

06480

NEWSLETTER!