

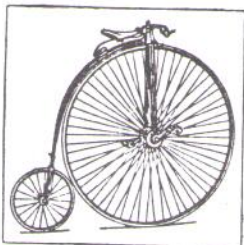
PORTLAND HISTORICAL SOCIETY

P.O. Box 98, Portland, CT 06480

SPRING, 1996 NEWSLETTER

Celebrate another successful year

FOR THE PORTLAND HISTORICAL SOCIETY AT THE
ANNUAL PICNIC - JUNE 25, 1996 - FIREMEN'S GROUNDS
(end of Indian Hill Avenue)



Representatives of the *Connecticut Wheelmen* will talk about and demonstrate an unusual development in the history of the bicycle, the "ordinary", popular from 1872 to 1885, with its tall front wheel and tiny rear wheel.

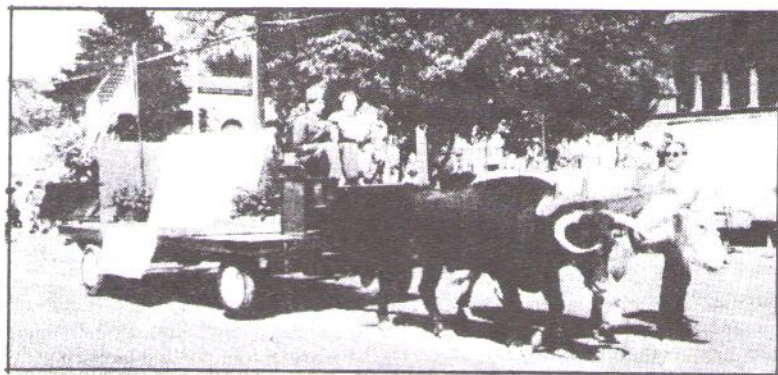
The picnic buffet will be as varied as you wish to make it. Just bring your favorite casserole or salad serving 6 to 8, and plates, utensils and mugs for yourselves, and join the fun. Desserts, beverage and breads will be provided by the Society Board.

Members of the Chatham (East Hampton) Historical Society have been invited to join us.

The social hour will begin at 6 pm, the buffet at 6:30. FRIENDS ARE WELCOME.

PORTLAND MEMORIAL DAY PARADE - *Chris Sullivan*

Our Memorial Day Parade float, prepared for last year's rained-out parade to honor the 50th anniversary of the end of World War II, finally made it to Main Street. It was designed as a tribute to Portland's WWII veterans. The more than 600 veteran's names, computerized by Bob McDougall from a picture of the old wooden honor roll that stood before the Town Hall during and after the war, were mounted on a structure provided by Jim Sarbaugh.



Robin and Eric Johnson again provided the wagon and two oxen, and their son Joe helped us arrange shrubs and tubs of geraniums that were loaned by the Larsons of Wheeler Farm Gardens. The Dowers, Frisbies and Sullivans made up the decorating committee.

Thanks to everyone above - the float was a success. Though somewhat overwhelmed by the roaring fire engines preceding them, the

patient oxen brought the parade to a fitting end as they recreated the Town Seal for another Memorial Day. A special thank you to Eric and Robin Johnson for representing us in the parade, and to their son Joe, who wore an authentic WWII uniform (Walt Dower's), and little Kyle Johnson who also rode the float.

For those who would like to identify their friends and relatives on our Roll of Honor, it will be on display in the Mary Flood Room of the Library during July.

However, should we be working for a permanent Honor Roll - perhaps a wall of honor in one of the hallways of Central School when it is renovated - a lasting memorial list of all Portland residents who served in our defense from the Civil War onwards??



MAIN STREET PANORAMA - 300 YEARS OF HISTORY

Bob McDougall has prepared for the Society a panorama of Main Street from the bridge to Indian Hill Avenue showing every building as of April, 1995, and identifying those structures built before 1900. He was inspired to undertake this project, he says, "through my involvement with the Portland Historical Society. I have heard many people speak of 'the way it used to be', or refer to landmarks which I could not picture - a common problem for local youngsters and new residents and visitors from out of town. With the aid of photos, I have attempted to: first, provide a perspective of Main Street Portland which will help people identify significant landmarks and their relationship to each other, and secondly, to snapshot the entire street at a single point in time, which can then be revisited as the street continues to evolve, so people can see 'the way it used to be in April, 1995'."

"The nature of change on Main Street has taken many forms over the years, including: floods and bridge construction; fires and new construction; wind storms and new plantings; vegetation growth; addition and removal of features from structures. Comparing these pictures with earlier photographs will permit one to find many subtle and some dramatic changes that have occurred."

"Portland Main Street offers a wide variety of architectural styles generously scattered along its entire length." We are including Bob's compilation of Main Street houses built before 1900, (67 in all), which lists their builders and architectural styles. Despite fire, flood and man's desire for change, the street proudly represents 300 years of Connecticut life. What will it look like in another 100 years?

MUSEUM - Pat Csere, 342-2168

PORTLAND CHILDREN VISIT

Thirty-two third grade Gildersleeve School children walked down historic Main Street recently with their teachers, Coleen Brede and Karen Labaddia, to visit the Historical Society Museum located in the Portland Library. The boys and girls have been working on a program about the history of Portland. Mrs. Ruth Freeburg and Mrs. William Csere answered their eager questions before they browsed through the museum collections of memorabilia and pictures of

the brownstone quarries, shipbuilding, Indians, agriculture and newspaper clippings of early events.

Letters of thanks from the children expressed their excitement at seeing tools used to build ships in the 1800's, chisels that carved designs in brownstone, glass milk bottles from former dairy farms in town, and the old brass Central School bell donated to the Society this year.

We expect to see many of the children again during the summer when the Museum will be open Saturday mornings from 10 to 12.

Boutique Historique

(Eleanor Crowther - 342-2907)

8-Inch, Blue-gray, Stoneware deep-dish pie plates,
microsafe - Incised "**Portland-1841**" \$25.
Matching 9-inch plates (limited supply). \$20.
Meshomasic Forest Video. \$10.
P.H.S. Collector Calendars (not all years). \$5.

Date	Builder/Occupant
c. 1703	Jonathan Warner
c. 1708	Deacon Samuel
c. 1712	Samuel Warner
c. 1715	Nathaniel White
c. 1717	Giles Hall
c. 1732	Ebenezer Gibbs
c. 1740	Capt. Jeremiah
c. 1749	Job Bates
c. 1755	Moses Willcox
c. 1755	Ebenezer White
c. 1765	Abel Cheney Sr.
c. 1770	Capt. James Gil
c. 1774	David White
c. 1778	George Lewis Jr.
c. 1788	George & Prude
c. 1790	Reuben Willcox
c. 1795	Nathan Gillum
c. 1804	Joseph Savage
c. 1805	Joel Hall Jr.
c. 1805	Mary Bidwell
c. 1807	Jeremiah Gilde
c. 1815	Capt. Cicero Br
c. 1820	Augustin Overt
c. 1820	Rev. Henry Tal
c. 1825	Erastus Kelsey
c. 1827	Robert Patten
c. 1830	Hall's Store/Be
c. 1834	Sylvester Gilde
c. 1837	Patten-Goodspe
c. 1839	Alfred Hall
c. 1840	Luther Savage
c. 1841	Capt. J. I. Wort
c. 1845	Shaler & Hall Q
c. 1845	Frederic Hall
c. 1845	George Pettis
c. 1845	George J. Whit
c. 1845	Egbert Button
c. 1845	Capt. Evelyn W
c. 1845	Alvin Brown
c. 1847	Stephen H. Whi
c. 1848	Jabez Jones
c. 1848	Clifford Daniel
c. 1848	Elisha Covell
c. 1849	Capt. Wellingt
c. 1850	George Hilliard
c. 1850	First Congrega
c. 1851	George Gillum
c. 1853	Jonathan J. Fu
c. 1853	Haynes P. Ran
c. 1853	Methodist Chu
c. 1855	Ellery B. Taylo
c. 1855	Sylvester Gilde
c. 1856	Elisha Covell
c. 1857	Dr. Charles H.
c. 1869	Congregational
c. 1869	John Isley
c. 1870	Emily Churchil
c. 1871	Alfred H. Allen
c. 1876	Henry Gildersl
c. 1879	Samuel S. Buc
c. 1883	Charles Bell
c. 1884	Laverty's Saloc
c. 1886	Thomas Picker
c. 1888	Henry Gildersl
c. 1889	Brainerd Siste
c. 1889	Engine Co. #2
c. 1892	Trinity Episco
c. 1925	Portland Trust

**Main Street Houses (by date) noted in
The History and Architecture of Portland**

	Address	Style
	613 Main Street	Intersecting gable
	478 Main Street	Colonial
	311 Main Street	3 bay house
	492 Main Street	Colonial
	643 Main Street	Colonial
	523 Main Street	Colonial
	589 Main Street	Colonial
	3 Indian Hill Avenue	Colonial
	497 Main Street	Colonial
	582 Main Street	Colonial
	633 Main Street	Colonial
	513 Main Street	Colonial
	584 Main Street	Colonial
	628 Main Street	Gambrel-roofed
	251 Main Street	Colonial/Federal
	448 Main Street	Colonial
	240-242 Main Street	Federal
	532 Main Street	Colonial/Federal
	246 Main Street	Federal
	370 Main Street	Georgian
	618 Main Street	Federal
	629 Main Street	Italianate
	496 Main Street	Federal
	572 Main Street	Federal
	321 Main Street	Federal
	356 Main Street	Georgian
	249 Main Street	Gable to street-commercial
	617 Main Street	Federal
	350 Main Street	Greek Revival
	245 Main Street	Greek Revival
	598 Main Street	Greek Revival
	533 Main Street	Greek Revival
	228-230 Main Street	Gable to street-tenement
	231 Main Street	Greek Revival
	568 Main Street	Greek Revival
	577 Main Street	Gable to street
	605 Main Street	Gable to street
	608 Main Street	Greek Revival
	609 Main Street	Gable to street
	585 Main Street	Greek Revival
	376 Main Street	Greek Revival
	380 Main Street	Greek Revival
	394 Main Street	Greek Revival
	384 Main Street	Greek Revival
	324 Main Street	Greek Revival
	554 Main Street	Gothic Revival
	329 Main Street	Greek Revival
	261 Main Street	Romanesque Revival
	336 Main Street	Carpenter Gothic Cottage
	381 Main Street	Greek Revival
	597 Main Street	Greek Revival
	646 Main Street	Gable to street-commercial
	405 Main Street	Greek Revival
	576 Main Street	Italianate
	553 Main Street	Italianate
	604 Main Street	Italianate
	315 Main Street	Second Empire
	332 Main Street	Second Empire
	625 Main Street	Italianate
	644 Main Street	Gable to street-commercial
	259 Main Street	Stick
	188 Main Street	Italianate
	337 Main Street	Queen Anne Style
	624 Main Street	Queen Anne Style
	325 Main Street	Queen Anne Style
	601 Main Street	Queen Anne Style
	345 Main Street	Romanesque Revival
	269 Main Street	Romanesque Revival

GEORGIAN: 1700-1776

LOOK FOR:

symmetrical formal boxlike facade with hipped roof



elaborate entrance

decorative railing or balustrade



end chimneys

bell course
quoins to emphasize corners

FEDERAL: 1780-1820

LOOK FOR:

boxlike (or sometimes curved) shape, with low pitched, side-gabled roof

Palladian window on the second floor over the main entrance



balustrade

stone lintels, often "keystone" over windows

bell course



slender sidelights and elliptical fan-shaped windows over front door

graceful wrought-iron handrails

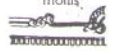
GREEK REVIVAL: 1820-1850

LOOK FOR:

Greek temple porches, or "porticos"

symmetrical facades, low or flat roofs

Greek ornamental motifs



ionic columns

classical pediment



Doric columns

heavy cornice



columns in relief on the wall, or "pilasters"

heavy cornice



columns in relief on the wall, or "pilasters"

CARPENTER GOTHIC: 1830-1870

LOOK FOR:

steep central gable flanked by smaller gables or dormers

ornamented veranda



pointed-arch windows



decorated bargeboards



pointed dormers

ITALIANATE: 1840-1880

LOOK FOR:

arcaded porches

low gabled roof, with very wide overhanging eaves and decorative brackets



cast-iron front

cupola

arched, tall windows with hood moldings

arched, tall windows with hood moldings

STICK STYLE: 1850-1890

LOOK FOR:

steep roofs with intersecting gables and massive chimneys

angular, asymmetrical shape



hooded dormers

towers

covered porches

SECOND EMPIRE: 1855-1885

LOOK FOR:

mansard roof

niches, sometimes with statues

imposing formality



arched paired windows

iron cresting

prominent cornice

prominent cornice

prominent cornice

ROMANESQUE: 1870-1890

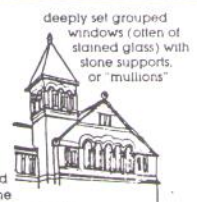
LOOK FOR:

simple, low form with curved walls and asymmetrical facade

short chimney to emphasize compact strength



patterns of rough-textured stone or brick, with wall and entrance of contrasting stone



deeply set grouped windows (often of stained glass) with stone supports, or "mullions"

QUEEN ANNE: 1870-1900

LOOK FOR:

projecting bays

patterned siding

leaded and stained glass



dormers

decorated porches

decorated porches

decorated porches

gable

sleep roots

sleep roots

sleep roots

fish scale shingles

fish scale shingles

fish scale shingles

fish scale shingles

P.H.S. OFFICERS

President

Eleanor Crowther

Vice-President

Christine Sullivan

Secretary

Wuth Freeburg

Treasurer

Charles Woltmann

Directors

Richard Gildersleeve

Walter Dower

Donald Kelsey

Finance Directors

Emanuel Crowther

James Elder

Donald Goodrich

**MARK YOUR CALENDAR FOR THESE INTERESTING
FALL COMING ATTRACTIONS!** - Regina Woltmann, 342-3092

September 24:

"The Letter Kills but the Spirit Gives Life". Local Author Kathleen Housley presents a program based on her book about the Smith sisters of Glastonbury who refused to pay taxes because women weren't allowed to vote.

October 22:

"Quarrying in Portland" presented by Michael Meehan discusses his present day quarrying operations in the brownstone quarries.

November 12:

ANNUAL MEETING & POTLUCK SUPPER - Introduction to and background of the Society's **1997 HERITAGE CALENDAR**.

December 10:

"Snow Dome Collectibles". Phil Blumenbrantz shares his collection of snow domes and discusses his hobby.

VOLUNTEERS NEEDED! ! *Call Pat 342-2168*

MUSEUM ROOM - Saturday mornings 10 - 12, July & August

P.H.S. BOOTH - Town Festival, September 7.

* * * * *

NEWSLETTER - *Phyllis and Bill Frisbie*

PORTLAND HISTORICAL SOCIETY

P.O. Box 98, Portland, CT. 06480

NON-PROFIT ORG.

U.S. POSTAGE

PAID

PERMIT No. 19

Portland, CT

06480

NEWSLETTER!